



360LaunchPad

REMOTE IMPROVEMENT WORKSHOPS

2 Client success stories

How 360LaunchPad is solving Asset Management problems REMOTELY.

By Ed Stanek, Jr.
Chief Operating Officer



Solving Asset Management Problems Remotely

With the recent pandemic and changes in workplace protocol, companies are taking advantage of 360LaunchPad's facilitated improvement workshops where live training/guidance is coupled with technology and physical work.

We see two common workplace scenarios where employees are forced to work in different settings:

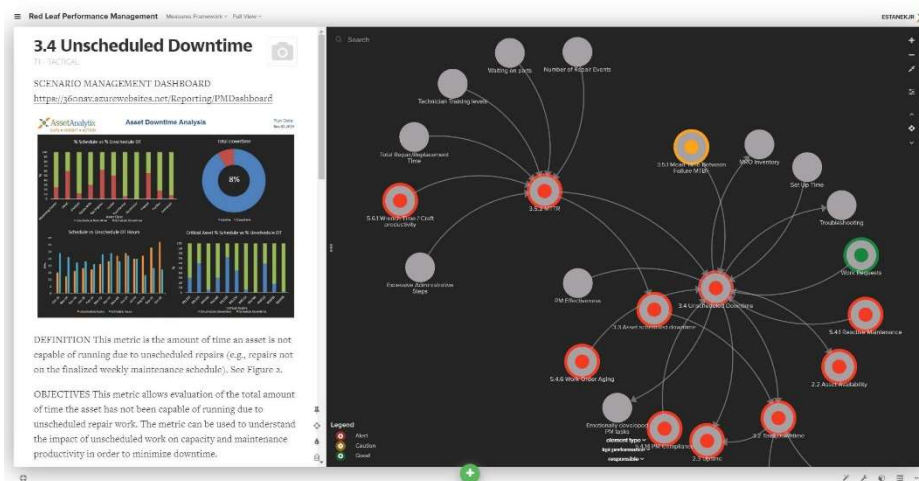
1. Essential employees still at work but no travel or visitors
2. Employees working from home; disconnected from their workplace and teams



The **360LaunchPad** model moves from traditional face-to-face to effective Screen-To-Screen where we engage our live subjective experts with the client's team no matter where they are located. In both revised working examples, the **360LaunchPad Remote Workshops** have delivered fantastic results as well as keeping the sanity and morale for individual and team accomplishment.

CLIENT 1: Performance Measure Architecture

The client's 15-person team is working partially at the corporate headquarters as well as 80% of the team working from their kitchen tables. The team worked through identifying all asset management measures by subprocesses and were able through whiteboard exercises to develop a fully connected framework which connected tactical measures at the shop floor directly to corporate objectives at the C-level of the organization.



- Measures at each function of the asset management program defined throughout the entire framework and utilized the SMRP's Body of Knowledge
- Measures were assigned to owners for easy identification on who is responsible for each objective
- Measures were connected which serves as a root cause failure analysis where program failures can be traced
- Behavioral causes were developed which identify specific behaviors or policies that affect the associated measure
- A full feasibility study was performed showing each measure's limitations or absence in the program, which serve as an implementation and improvement plan.
- Role-based reporting and information dashboards were defined, and gaps were captured to advance the needs of owners

CLIENT 2: PMOptimization Deployment

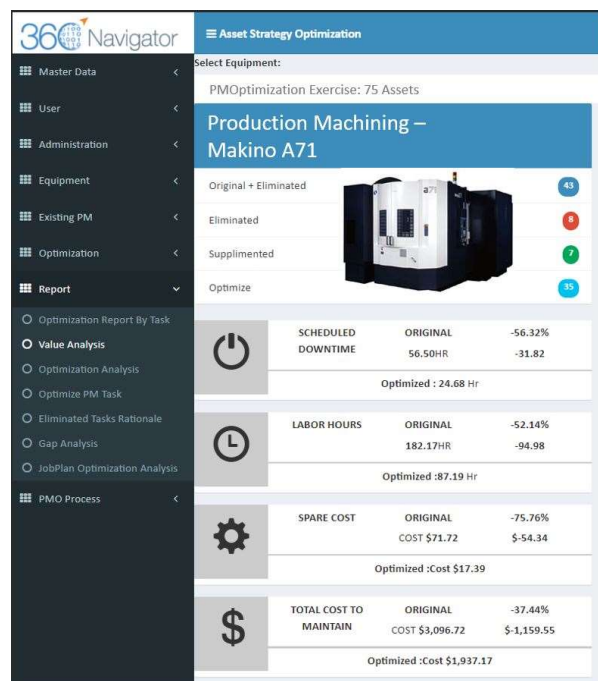
A Fortune 100 client had already booked onsite training and facilitation to launch their PM optimization initiative. The trip was first delayed, then cancelled due to the associated travel restrictions, but the team chose to utilize **360LaunchPad Remote Workshops** to keep valuable initiatives moving and avoid inertia.

The team members, working mostly from their home offices and VPN access to their company drives, were able to not only receive initial training in PMOptimization, they have continued with six additional assets resulting in 55% reduction in maintenance labor!

Utilizing the 360PMoptimization SaaS application included in the workshop, the team was able to collaborate and work together, even while separated.

The facilitated workshop exercises accomplish the following:

- 7 assets optimized within the month
- Fantastic optimization results including
 - 52% reduction in maintenance labor
 - 76% reduction in PM-related spare parts cost
 - 56% reduction in schedule downtime
- Empowered maintenance technicians, not having been trained in RCM or FMEA, to work through an entire exercise following a straightforward process
- Facilitated workshops brought multiple sites together for consistency and corporate messaging



To learn more about how your team can benefit from this non-intrusive, continuous improvement workshop model, please visit <https://www.assetanalytix.com/remote-workshops/> or email Ed Stanek directly (contact info below).



Edward Stanek

Chief Operations Officer

Denver, CO Office

Cell: 720-602-0158

LinkedIn: www.linkedin.com/in/edwardstanek/

About

Internationally renowned subject matter expert in Enterprise Asset Management, recognized for successfully integrating reliability and operational excellence to build high-performance organizations with significant financial rewards

A passion for maintenance and reliability is based on the experience gained through applying EAM to a wide variety of markets, demographics in over 24 countries, worldwide. This background provides the opportunity to work with all functions of the organization; management, engineering, maintenance and operations developing measurable results through true partnerships in reliability.